



## Documents, Boat Markings and Compliance Plates The SEAL SV 320

### Contents

1. Specifications Pg 1
2. SAMSA Buoyancy Compliance pg 2
3. ISO 6185 Boat Markings and Compliance pg 3

## THE SEAL SV 320



Ark Inflatables reserves the right to modify any specification in the course of research and design.  
All specifications have a 3% tolerance  
Determined and compliant with ISO 6185 -1 CAT D



# Documents, Boat Markings and Compliance Plates

## The SEAL SV 320

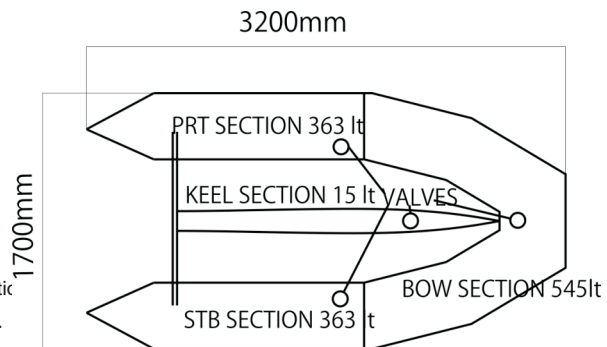
### SAMSA BUOYANCY COMPLIANCE CERTIFICATE



MODEL-	SEAL 3.2
Capacity	3 Persons ( as per SAMSA regulations ie 1 adult per metre of boat )
Max Engine	25 hp
Length	3.2
Width	1.70 metres
Tube Diameter	440mm
Total No of Air Chambers	3 + keelr (or closed cell foam floor)
Total Volume of Chambers	(545 + 362 +362 + 15 ) = 1284 lt
Weight of Boat with engine	48 kg + 48 kg = 96kg
Total weight of Crew	300 kg
Total Weight Boat and Crew	396 kg
Buoyancy of smallest chamber	362 lt
Required Buoyancy 60%	237 lt
Percentage Buoyancy	153 %

### Description

A 3.2 metre Inflatable boat with 480 mm tube diameter  
 Three air chambers in the main collar and a keel  
 The main collar is divided into 3 airtight independent chambers the volume of which are 545 lt in the bow section and 362 lt in each of the Port and Starboard sections .



### Buoyancy Calculations

Calculations are based on assumption that only one of the smallest of the three main collar chambers are inflated ie 362 lt  
 With a 25 hp motor of 48 kg we calculate the load as 48 + 48 + 75 +75 +75 +75 = 396 kg.  
 The formula for required buoyancy is 60 % of this weight expressed as litres this 396 X 60% is which is 237 lt .  
 Thus the buoyancy ratio is 362 /237= 152 %

#### Manufacturers Statement

I have applied my mind to the details provided by the owner and inspected the vessel concerned and find no inconsistencies which would cause me to question that the vessel has not been fitted as declared .The declared buoyancy can reasonably be expected to comply with the regulations

Signed

William Edwards The Owner ARK INFLATABLES

**ARK INFLATABLES (ck95/31795/23)**



# Documents, Boat Markings and Compliance Plates

## The SEAL SV 320

+ + = 684 kg = 4 = 6

= 15 hp Max

DESIGN CATEGORY D

= 0.35 bar  
3.5 psi

MANUFACTURER : ARK INFLATABLES  
COUNTRY OF ORIGIN : SOUTH AFRICA  
SERIAL NUMBER :  
MODEL NUMBER : SEAL SV 300

HIN CODE :  
ZA-ARK.....

**DETERMINED BY ISO 6185-1 CAT D APPLIES.**

# CAUTION

- GET PADDLESPTS INSTRUCTIONS SPECIFIC TO THIS TYPE OF CRAFT AND INTENDED USAGE
- OBTAIN CERTIFIED FIRST AID TRAINING AND CARRY FIRST AID AND RESCUE/SAFETY EQUIPMENT
- ALWAYS WEAR AN APPROVED PERSONAL FLOTATION DEVICE
- ALWAYS WEAR A HELMET WHERE APPROPRIATE
- DRESS APPROPRIATELY FOR WEATHER CONDITIONS. COLD WATER AND COLD WEATHER CAN RESULT IN HYPOTHERMIA
- CHECK YOUR EQUIPMENT PRIOR TO EACH USE FOR SIGNS OF WEAR OR FAILURE
- NEVER PADDLE ALONE
- DO NOT PADDLE IN FLOOD CONDITIONS
- BE AWARE OF APPROPRIATE RIVER WATER LEVEL, TIDAL CHANGES, DANGEROUS CURRENTS, WEATHER CHANGES AND STRONG OFFSHORE WINDS
- SCOUT UNFAMILIAR WATER AND PORTAGE IF IN DOUBT.
- DO NOT EXCEED YOUR PADDLING ABILITY
- CONSULT A PHYSICIAN PRIOR TO PADDLESPT TRAINING
- DO NOT USE THIS PRODUCT UNDER THE INFLUENCE OF ALCOHOL OR MIND ALTERING DRUGS
- FOLLOW THE MANUFACTURERS RECOMMENDATIONS FOR THE USE OF THIS PRODUCT
- IF ADDITIONAL OUTFITTING IS REQUIRED SEEK ADVICE FROM THE MANUFACTURER

THE USER OF THIS PRODUCT ACKNOWLEDGES BOTH AN UNDERSTANDING AND AN ASSUMPTION OF THE RISKS INVOLVED IN PADDLESPTS



[www.arkinflatables.com](http://www.arkinflatables.com)